



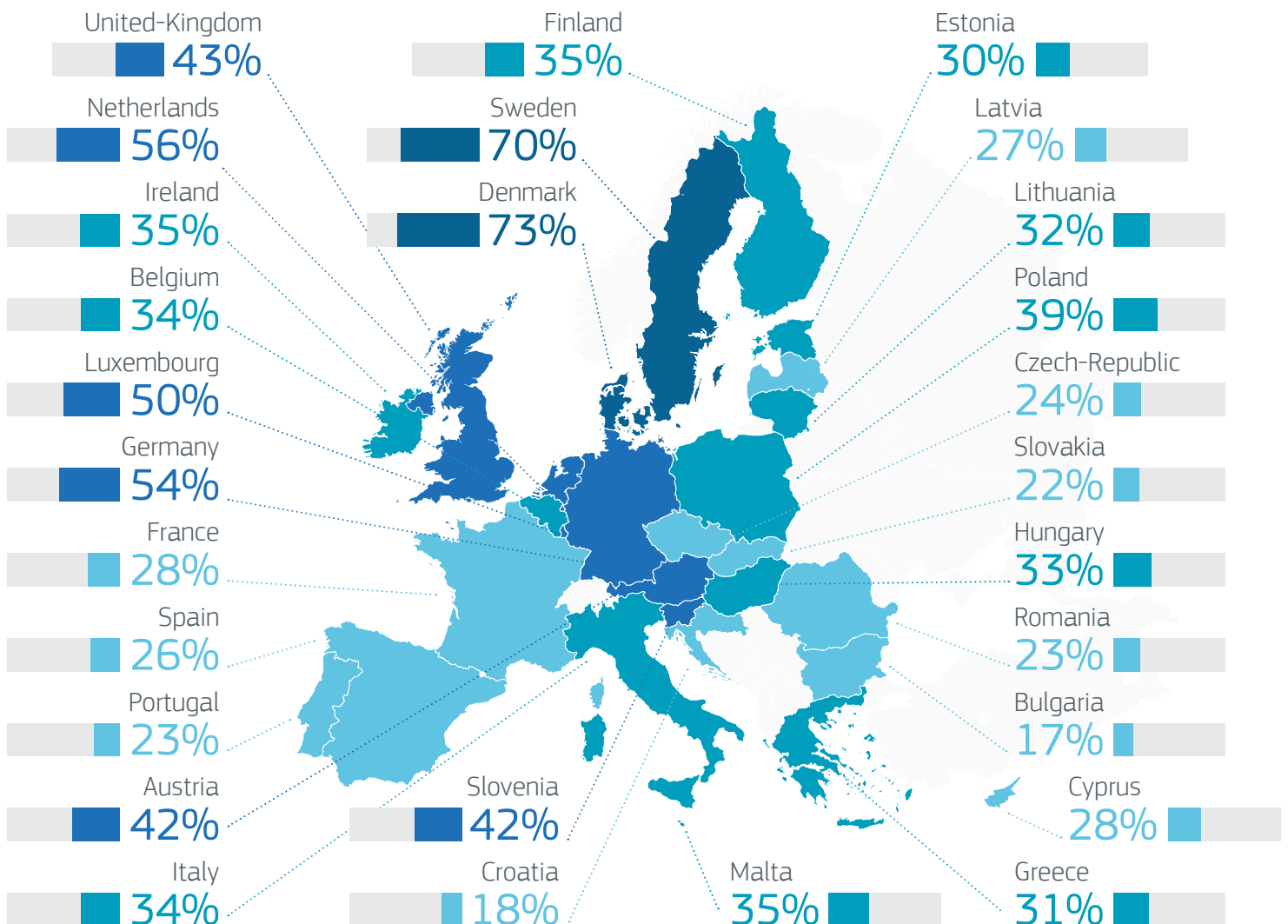
1 | How Europeans perceive immigration from outside the EU

6 IN 10 EUROPEANS
DO NOT FEEL WELL INFORMED ABOUT IMMIGRATION & INTEGRATION

Not very well informed **46%**
Not at all informed **15%**

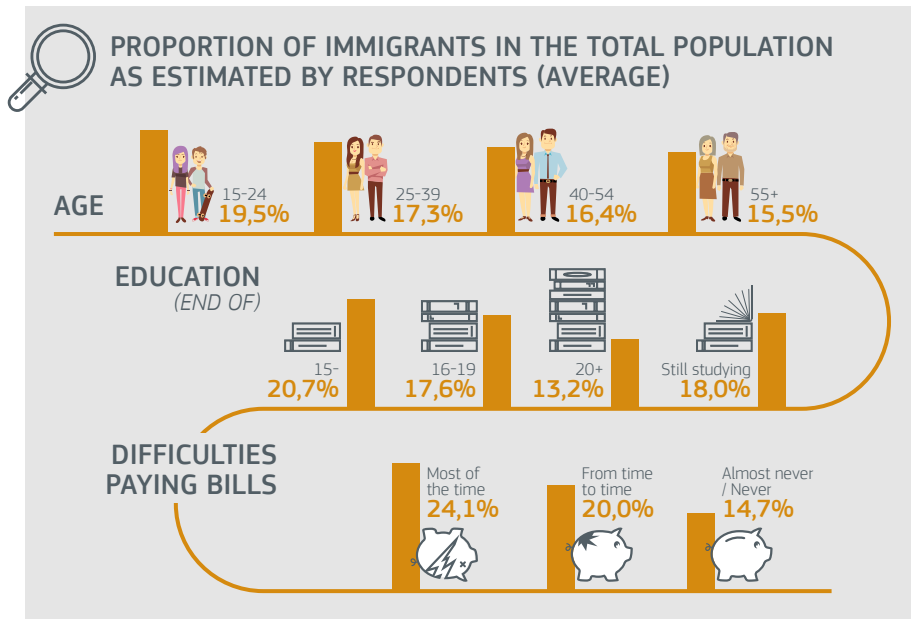
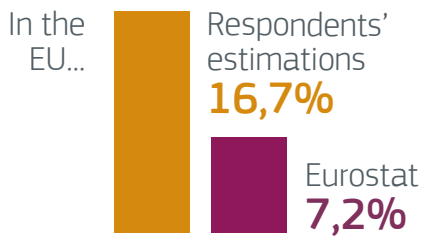


% TOTAL 'WELL INFORMED' ABOUT IMMIGRATION AND INTEGRATION RELATED MATTERS

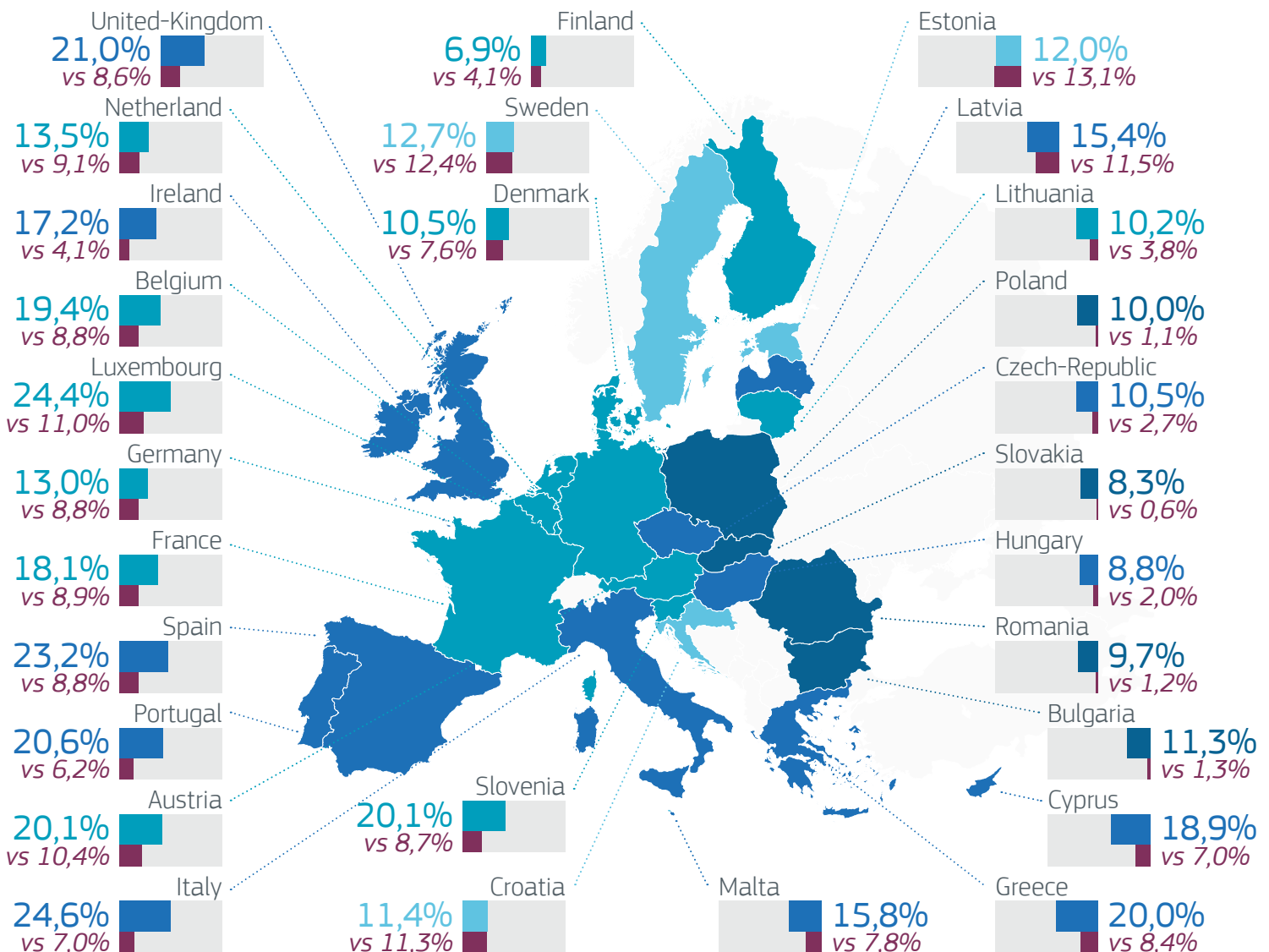


1 | How Europeans perceive immigration from outside the EU

RESPONDENTS WERE ASKED TO ESTIMATE THE SHARE OF IMMIGRANTS IN THEIR COUNTRY: ON AVERAGE IN THE EU, RESPONDENTS HAVE **OVERESTIMATED** THIS SHARE BY A FACTOR OF 2



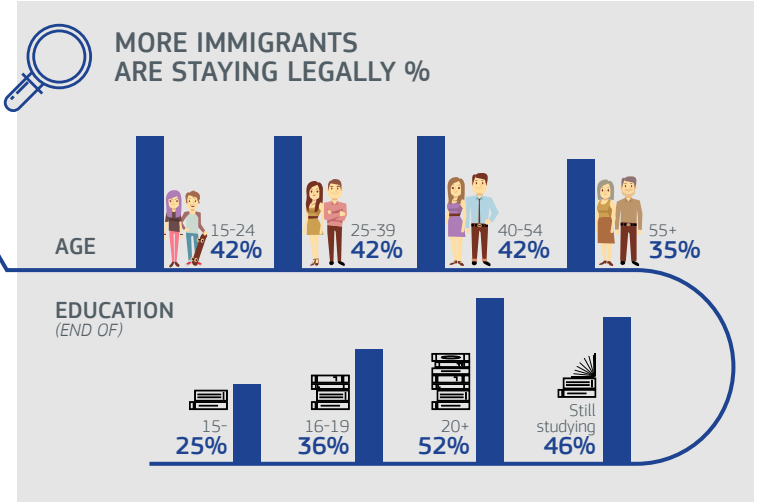
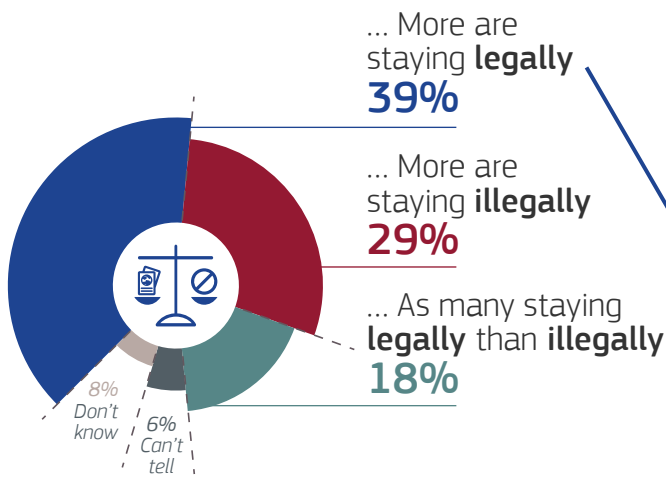
... AND IN MOST COUNTRIES



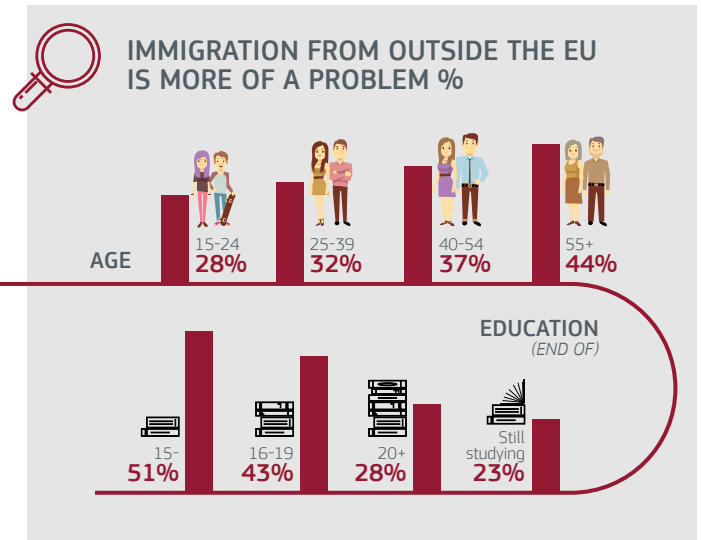
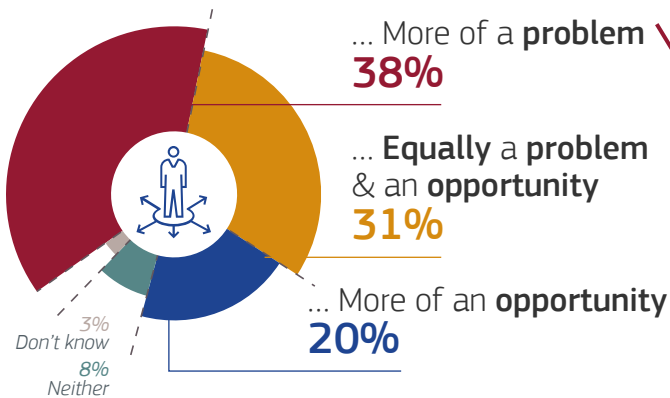
■ Average estimated proportion of immigrants in the total population in their country
 ■ Eurostat official data
 The darker the blue, the higher the ratio between the estimated and real proportion

1 | How Europeans perceive immigration from outside the EU

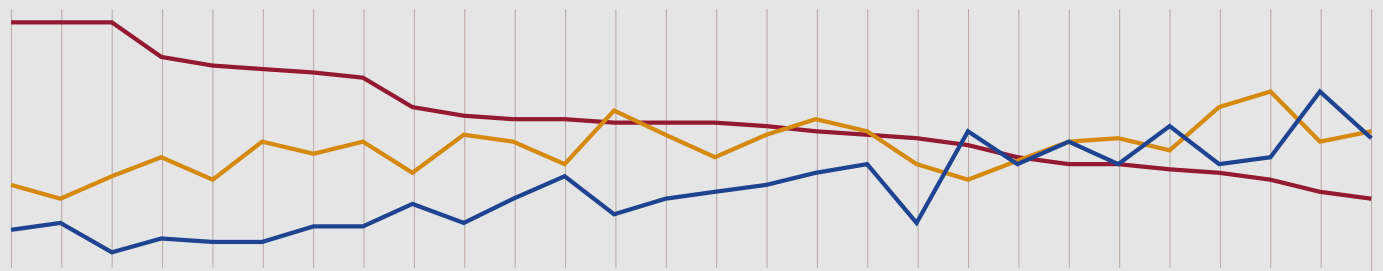
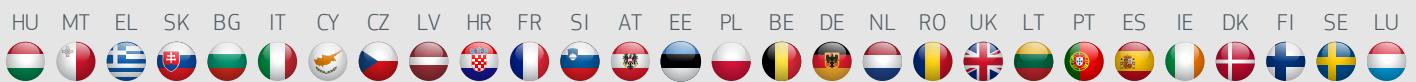
HALF OF EUROPEANS SAY THERE ARE **AT LEAST AS MANY ILLEGALLY** AS THERE ARE **LEGALLY STAYING IMMIGRANTS**



FOR EUROPEANS, **IMMIGRATION FROM OUTSIDE THE EU** IS PERCEIVED AS...



IMMIGRATION FROM OUTSIDE THE EU AS PERCEIVED IN EACH COUNTRY... %

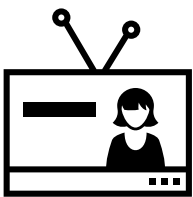
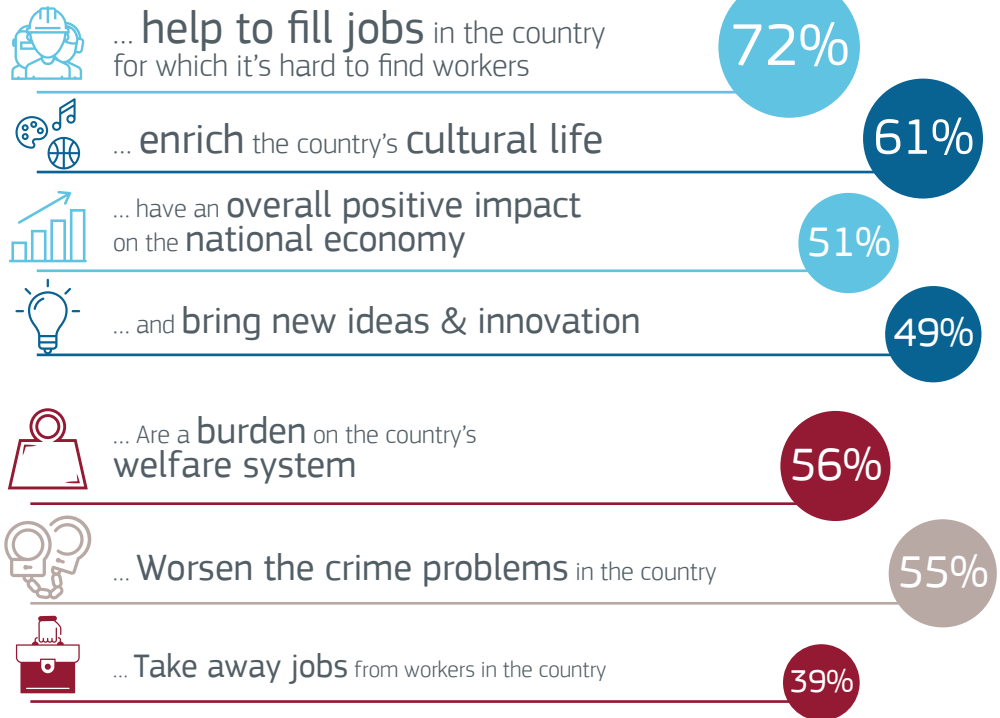


63	63	63	54	52	51	50	49	41	39	38	38	40	37	37	36	38	35	33	35	28	32	33	36	41	56	45	35
21	17	23	28	22	32	29	32	24	34	32	26	37	34	28	34	35	34	26	31	27	32	26	30	26	28	32	33
9	11	3	7	6	6	10	10	16	11	17	23	13	17	19	21	24	26	11	22	26	26	26	25	24	22	19	17

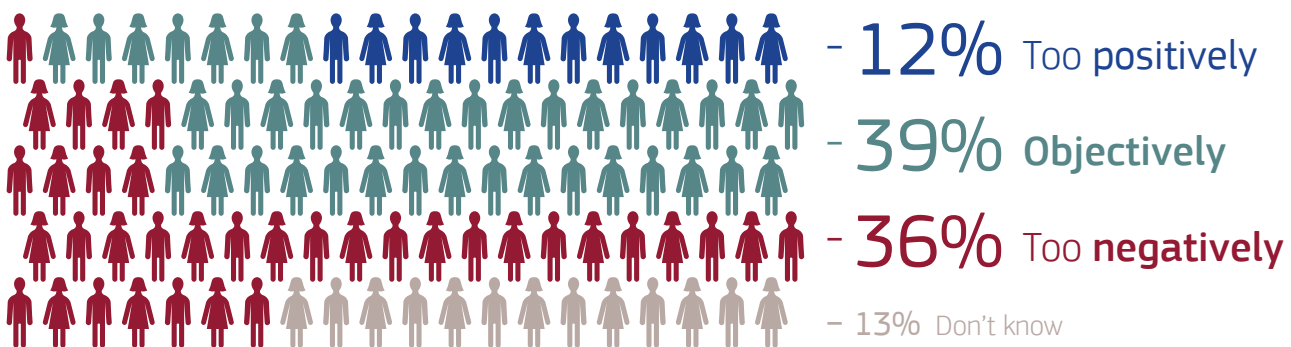
1 | How Europeans perceive immigration from outside the EU

LARGE PROPORTIONS OF EUROPEANS AGREE WITH THE FACT THAT IMMIGRANTS...

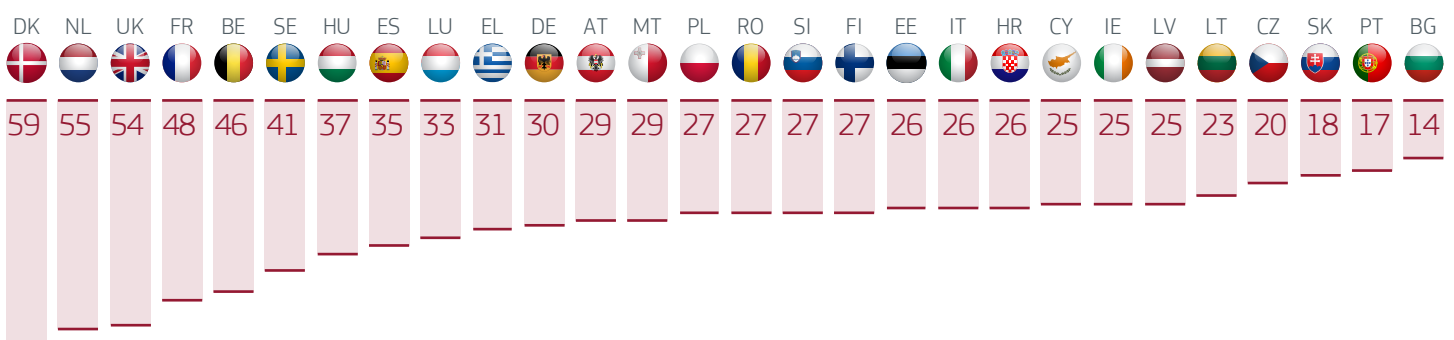
HOWEVER, MANY ALSO AGREE THAT IMMIGRANTS...



ONLY 4 IN 10 EUROPEANS THINK THAT THE MEDIA PORTRAY IMMIGRANTS IN **AN OBJECTIVE WAY**...
... AND A SIMILAR PROPORTION THINKS THEY ARE PORTRAYED **TOO NEGATIVELY**



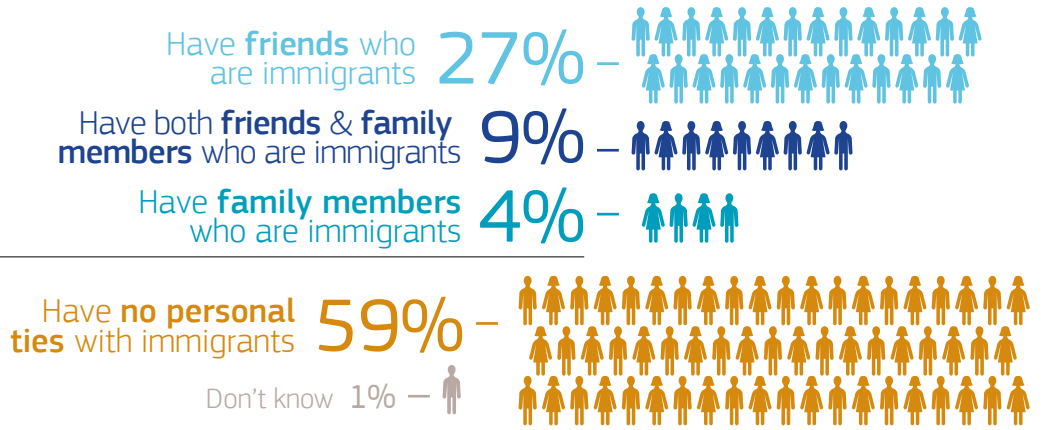
% THE MEDIA PORTRAY IMMIGRANTS TOO NEGATIVELY



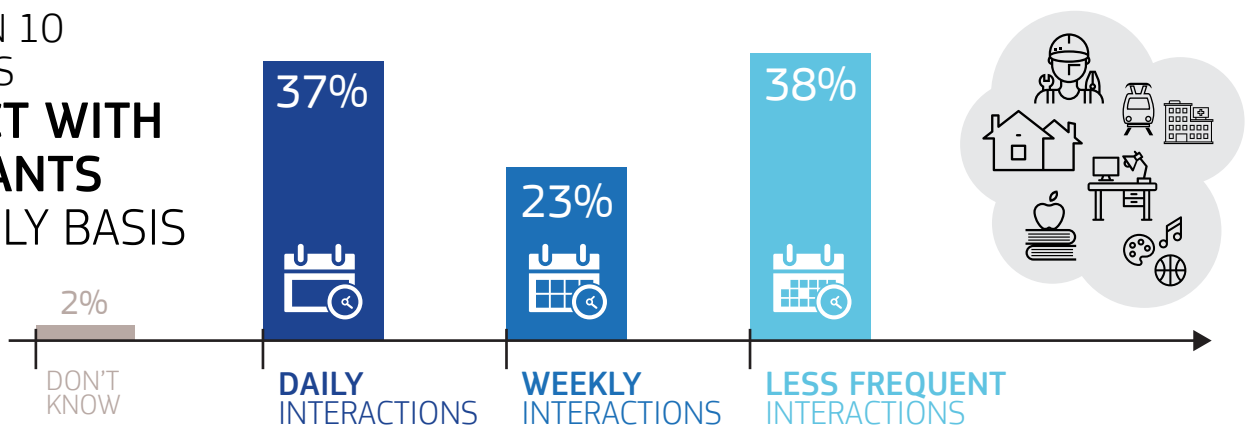


2 | Living with immigrants

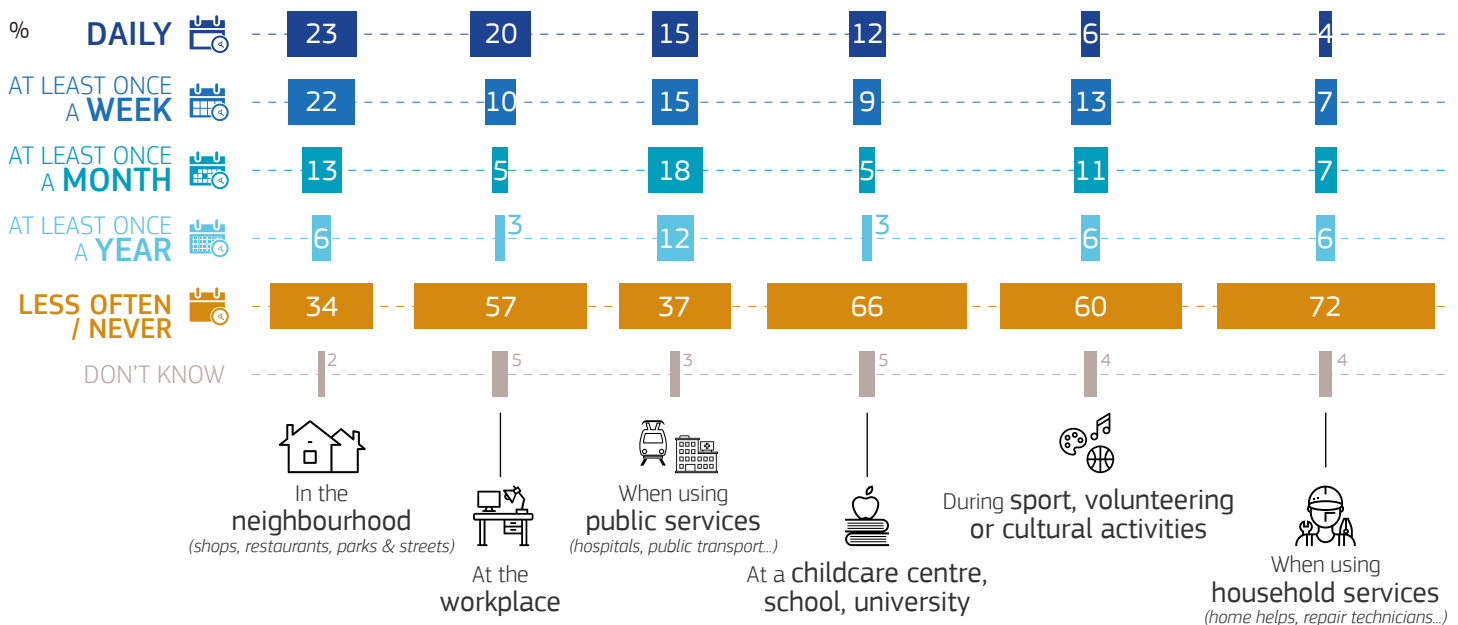
ABOUT 4 IN 10 EUROPEANS HAVE EITHER FRIENDS OR FAMILY MEMBERS WHO ARE IMMIGRANTS



ABOUT 4 IN 10 EUROPEANS INTERACT WITH IMMIGRANTS ON A DAILY BASIS



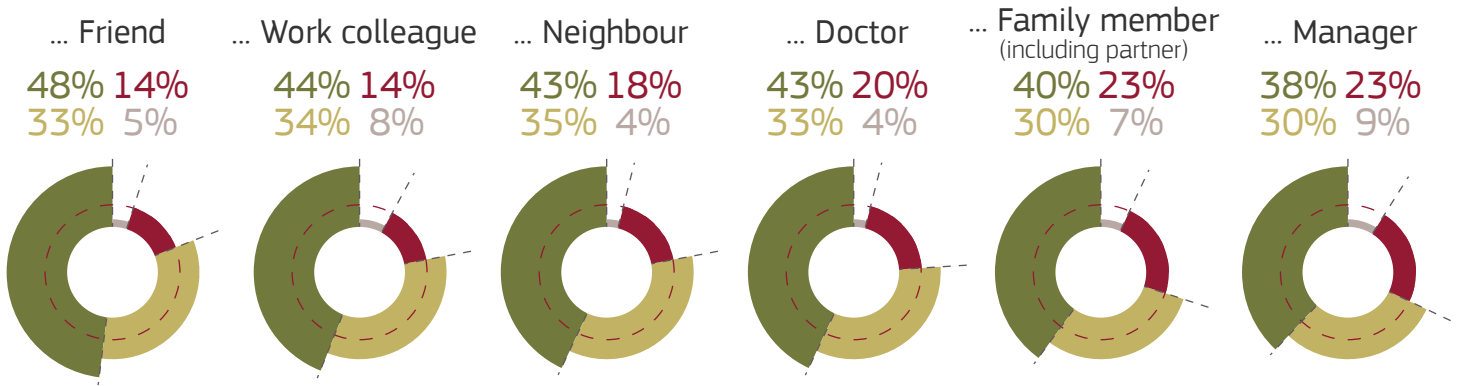
PEOPLE ARE MORE LIKELY TO INTERACT WITH IMMIGRANTS DAILY IN THE NEIGHBOURHOOD AND AT THE WORKPLACE



2 | Living with immigrants

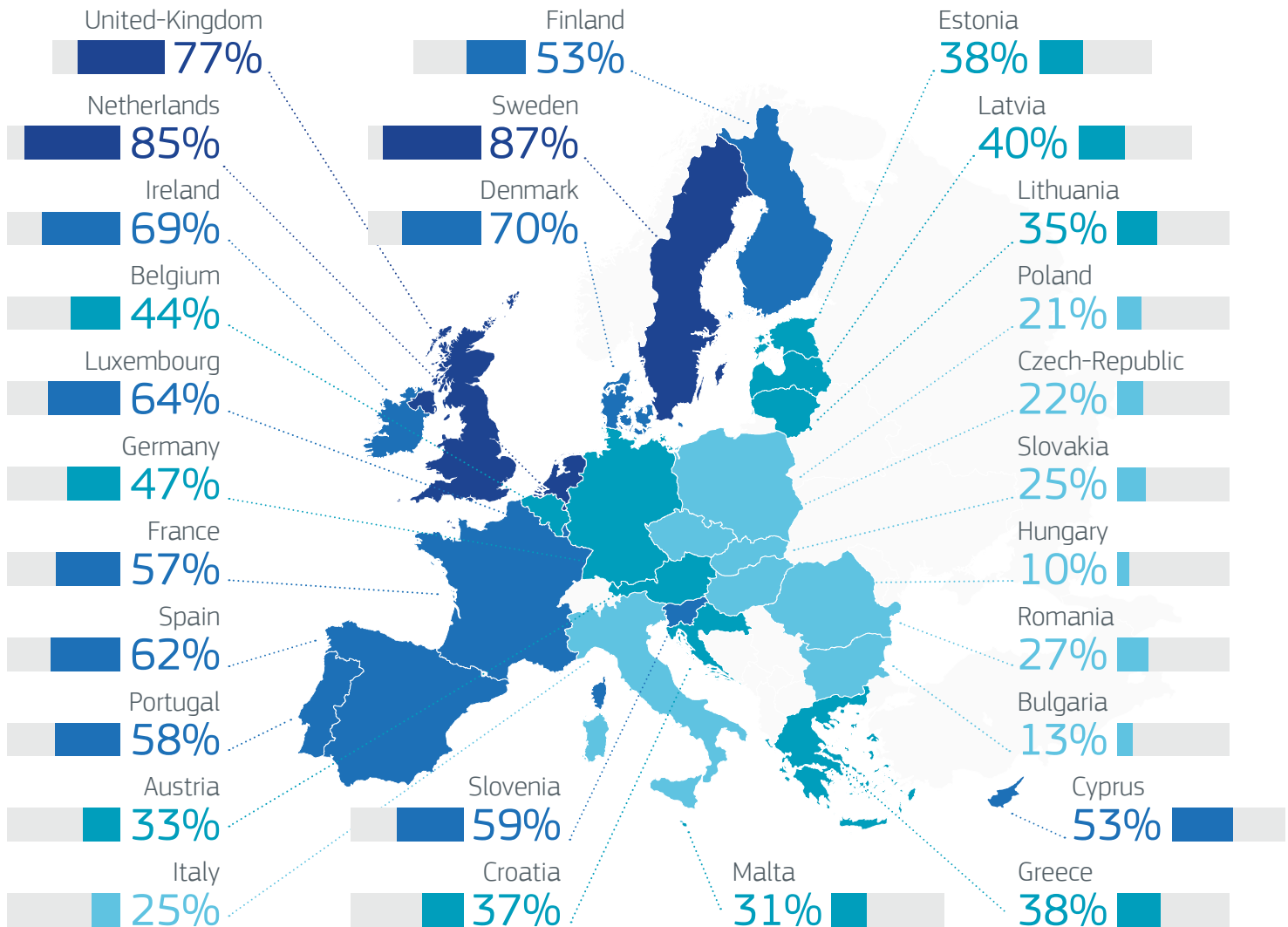
MOST EUROPEANS **FEEL COMFORTABLE** HAVING SOCIAL RELATIONS WITH IMMIGRANTS AS...

- Totally comfortable
- Somewhat comfortable
- Total 'Uncomfortable'
- Don't know



57% feel comfortable having any of these types of social relations with immigrants

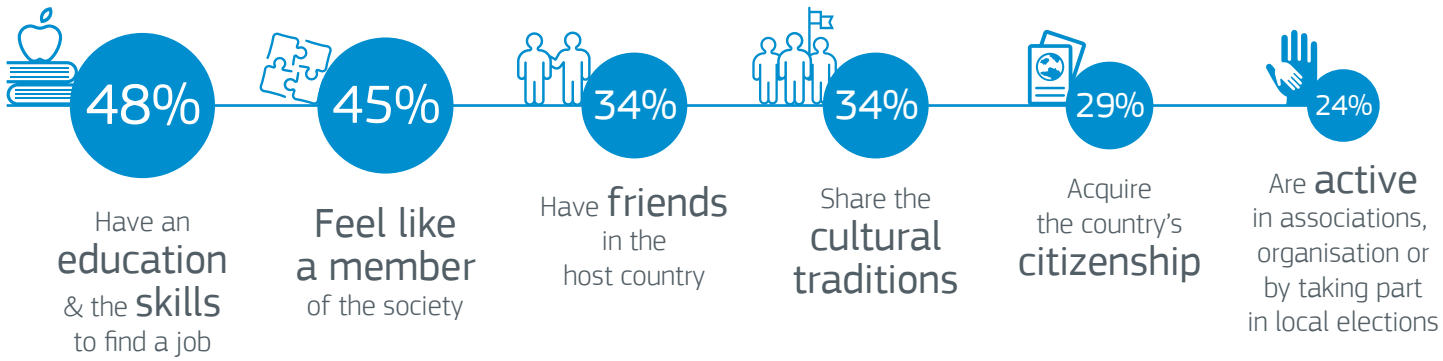
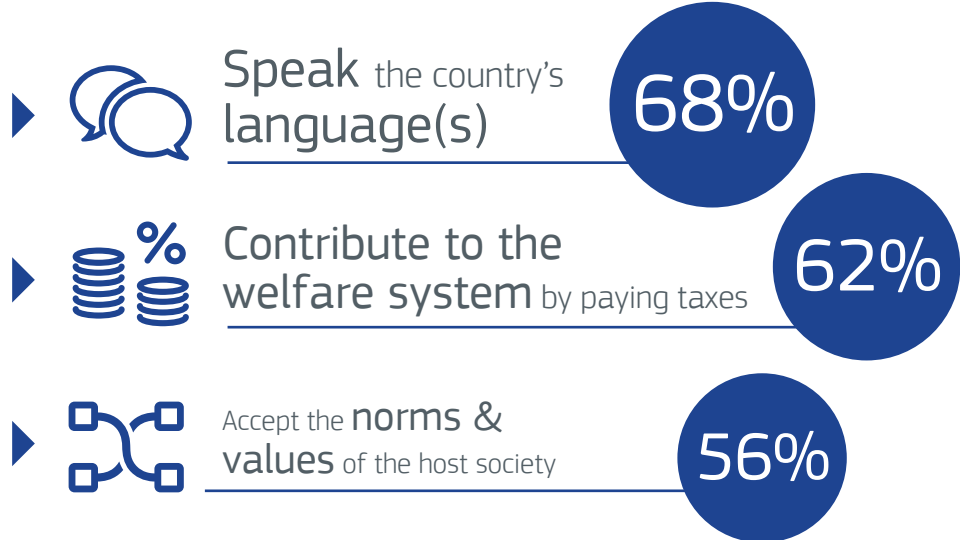
% TOTALLY COMFORTABLE HAVING AN IMMIGRANT AS A FRIEND



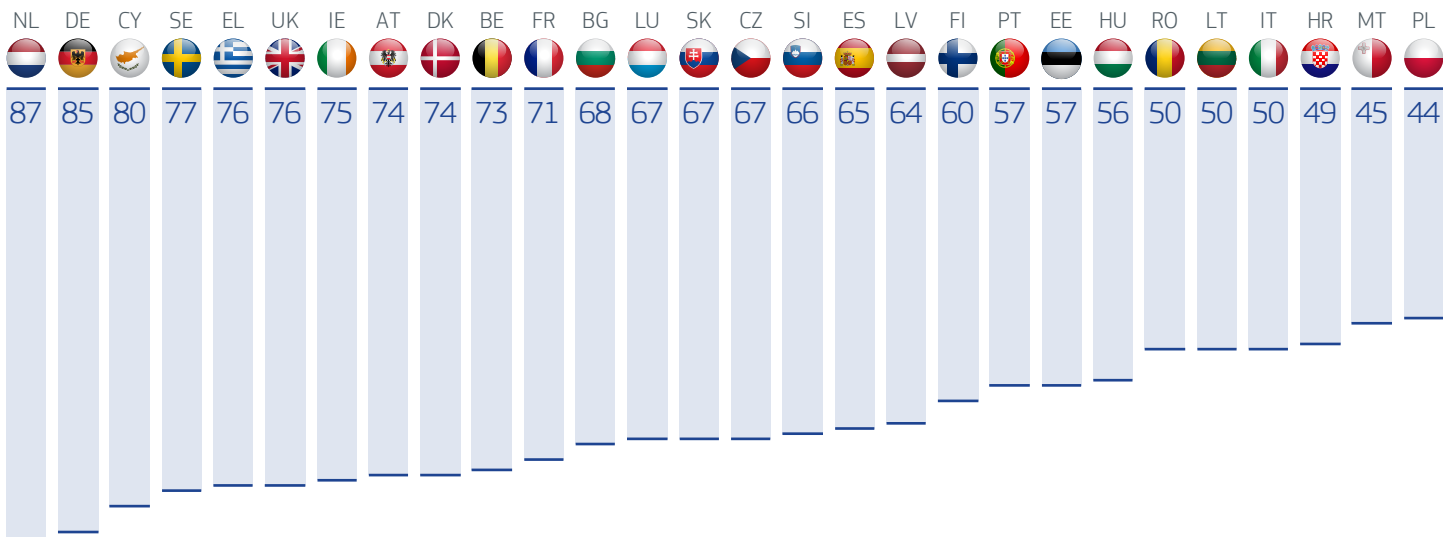


3 | What Europeans perceive as successful integration

MOST EUROPEANS THINK THAT FOR **THEIR SUCCESSFUL INTEGRATION** IT IS VERY IMPORTANT THAT IMMIGRANTS:

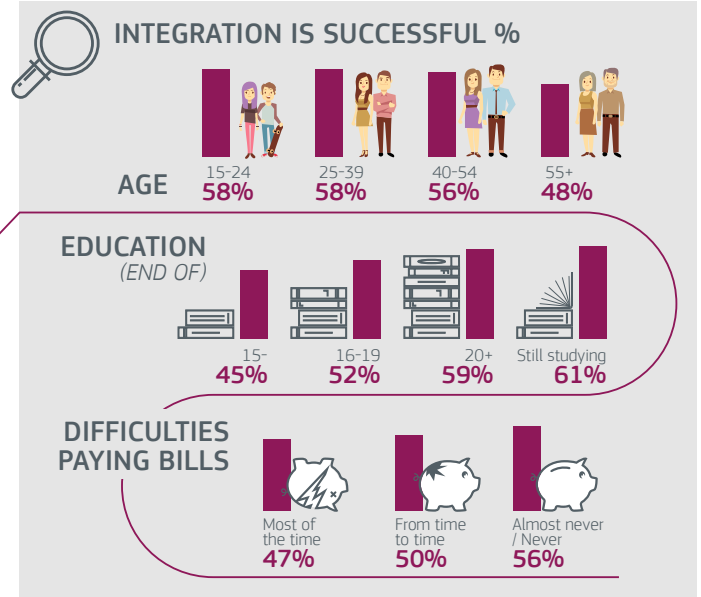
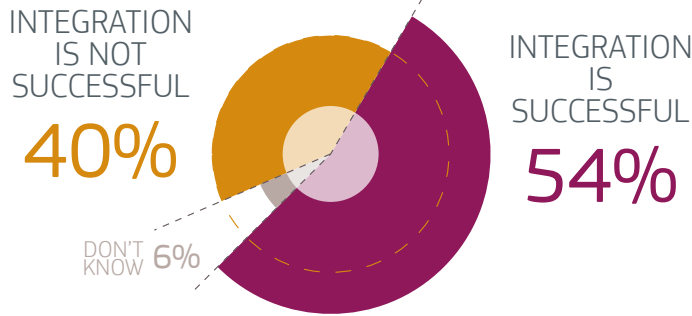


% VERY IMPORTANT TO SPEAK THE COUNTRY'S LANGUAGE(S)

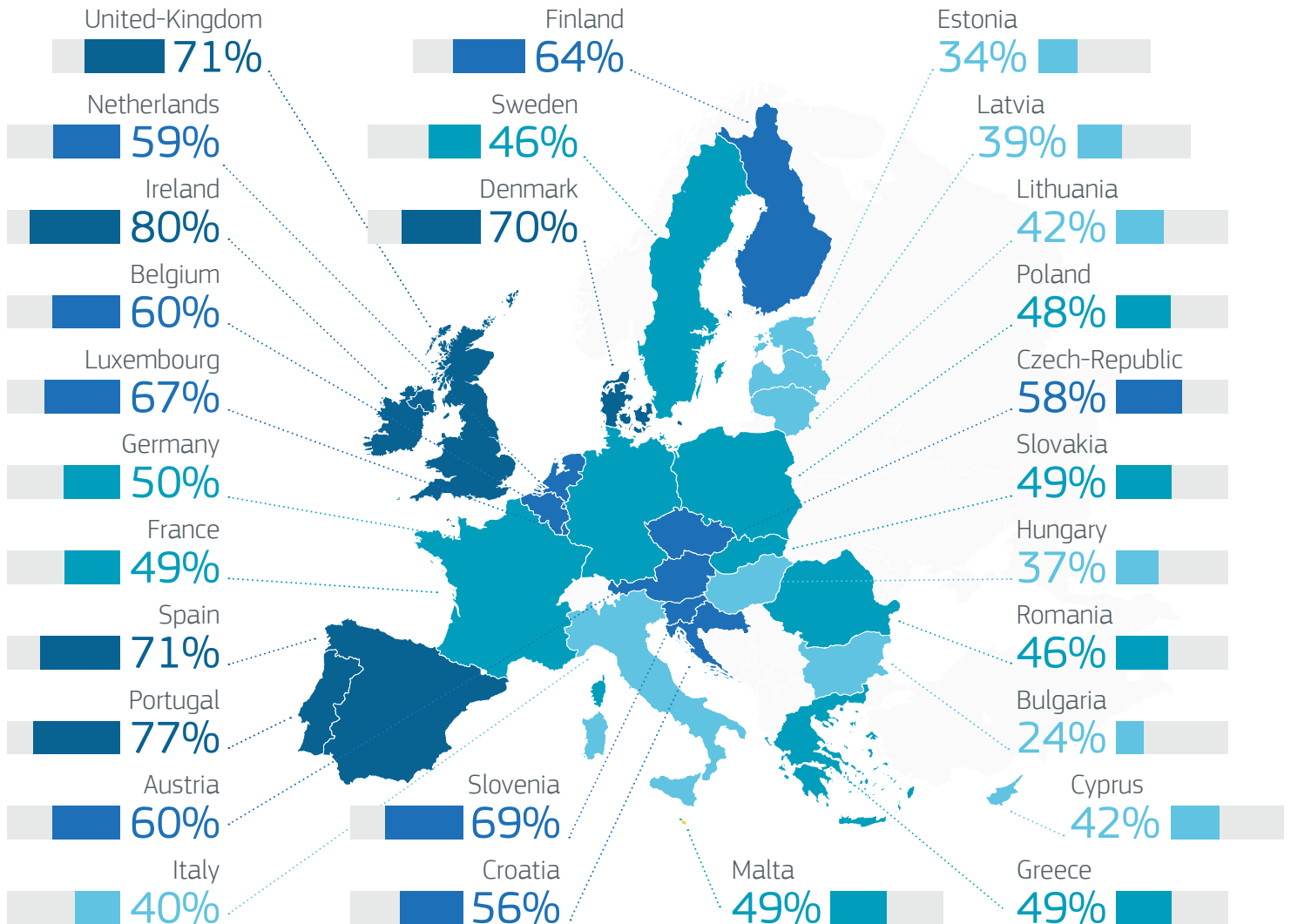


3 | What Europeans perceive as successful integration

A MAJORITY OF EUROPEANS AGREE THAT INTEGRATION OF IMMIGRANTS IS SUCCESSFUL IN THEIR LOCAL AREA OR COUNTRY...



... BUT OPINIONS ON HOW SUCCESSFUL THE INTEGRATION OF IMMIGRANTS IS VARIES A LOT ACROSS MEMBER STATES





4 | What can hinder or help immigrants' integration?

EUROPEANS THINK THAT THE INTEGRATION OF IMMIGRANTS CAN BE HINDERED DUE TO...

- A major obstacle
- A minor obstacle
- Not an obstacle at all
- Don't know

Limited efforts by immigrants to integrate

65% 6%
24% 5%



Discrimination against immigrants

62% 8%
25% 5%



Limited interactions between immigrants and citizens of the host country

53% 9%
33% 5%



Limited access to education, healthcare & social protection

53% 15%
27% 5%



63% 9%
24% 4%

Difficulties in finding a job

55% 9%
28% 8%

Difficulties in accessing long term residence permits

53% 12%
29% 6%

Negative portrayal of immigrants in the media

47% 13%
32% 8%

Difficulties in bringing in family members

... AND CAN BE SUPPORTED

BY THE FOLLOWING MEASURES:



Introducing or improving integration programmes for immigrants upon arrival

88%

Offering or improving language courses to immigrants upon arrival



Making integration programmes & language courses mandatory for immigrants upon arrival

85%

85%

Supporting the enrolment of immigrants' children in pre-school



Better preparing the local community by providing information about immigrants & immigration

84%

83%

Providing measures for job finding



Ensuring that immigrants have the same rights as the country's citizens

81%

81%

Promoting intermingling of local people and immigrants



Providing more financial support to civil society organisations that promote integration

79%

78%

Providing pre-integration measures in the immigrants' countries of origin



Giving immigrants the right to vote at local elections or maintaining this right where it already exists

77%

73%

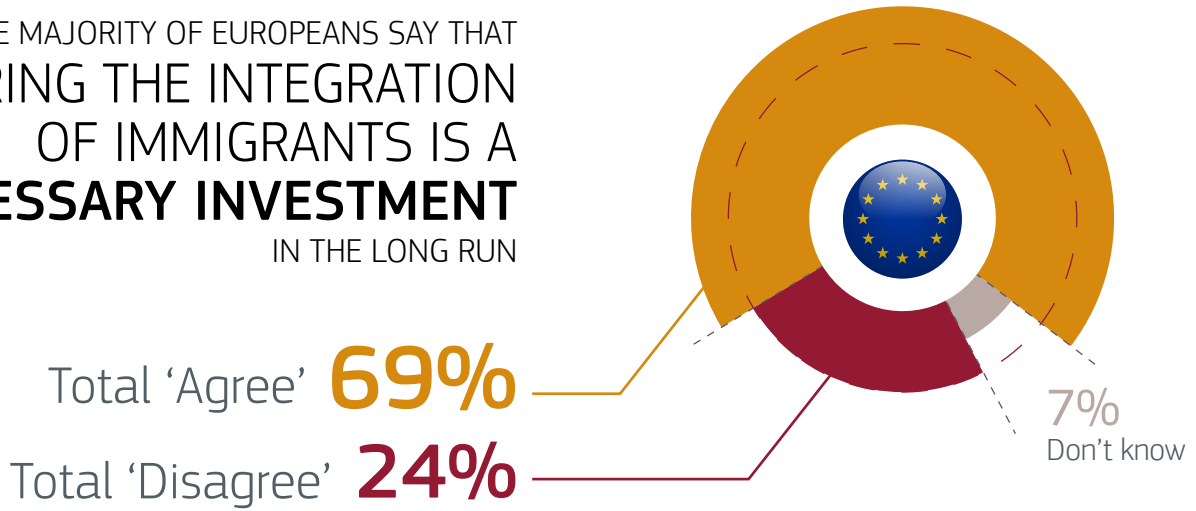
Introducing stronger measures to tackle discrimination against immigrants



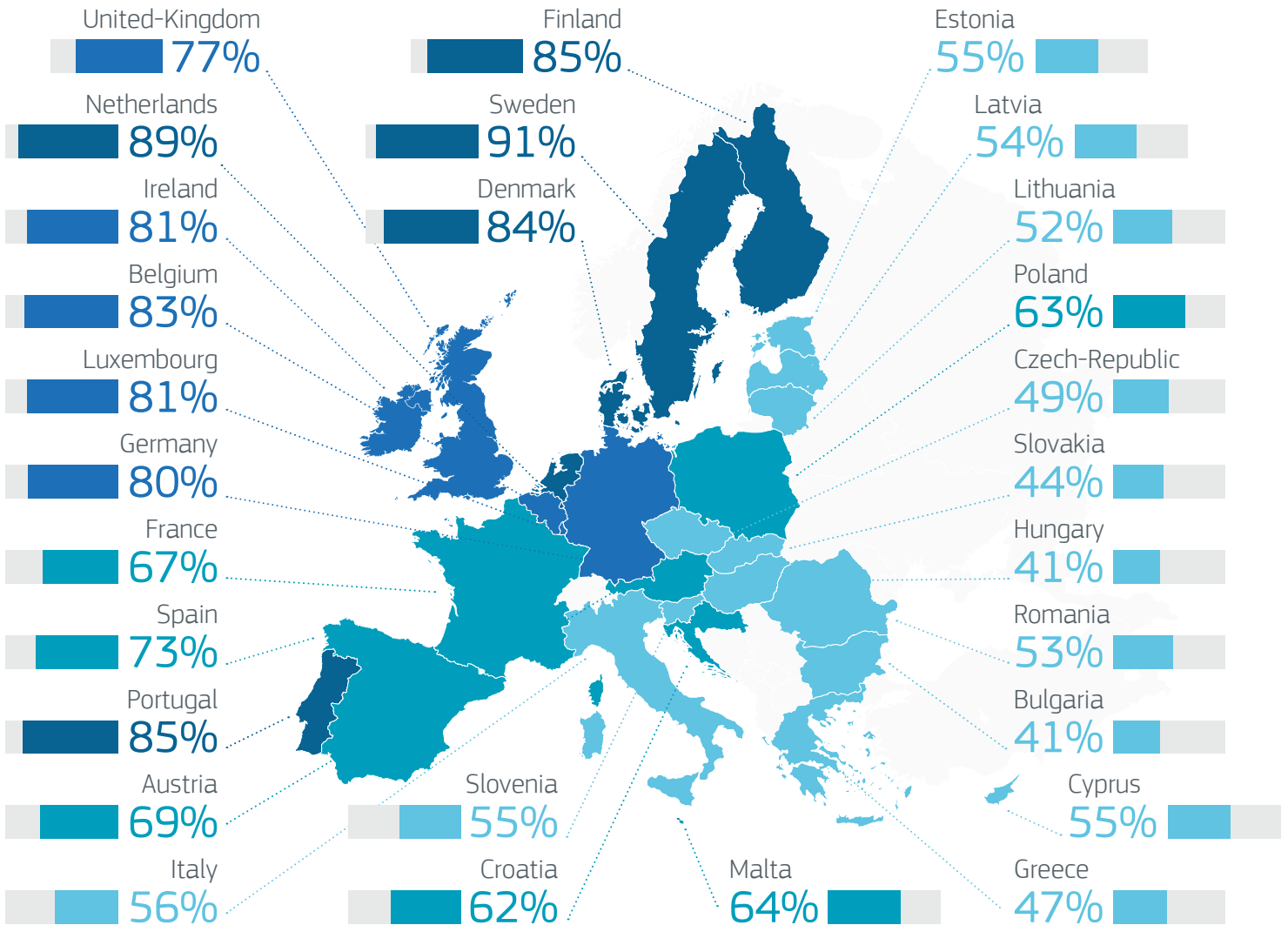
55%

4 | What can hinder or help immigrants' integration?

A LARGE MAJORITY OF EUROPEANS SAY THAT FOSTERING THE INTEGRATION OF IMMIGRANTS IS A **NECESSARY INVESTMENT** IN THE LONG RUN



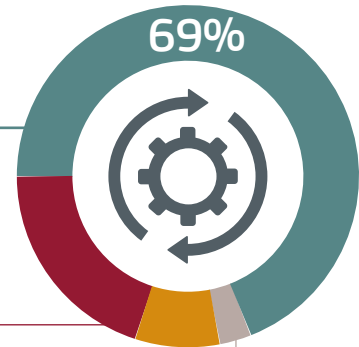
% TOTAL 'AGREE' THAT FOSTERING THE INTEGRATION OF IMMIGRANTS IS A NECESSARY INVESTMENT IN THE LONG RUN





5 | Who is responsible for the integration of immigrants?

IN THE EU, INTEGRATION IS SEEN AS A TWO-WAY PROCESS WHERE BOTH THE IMMIGRANTS AND THE HOST SOCIETY ARE RESPONSIBLE FOR SUCCESSFUL INTEGRATION

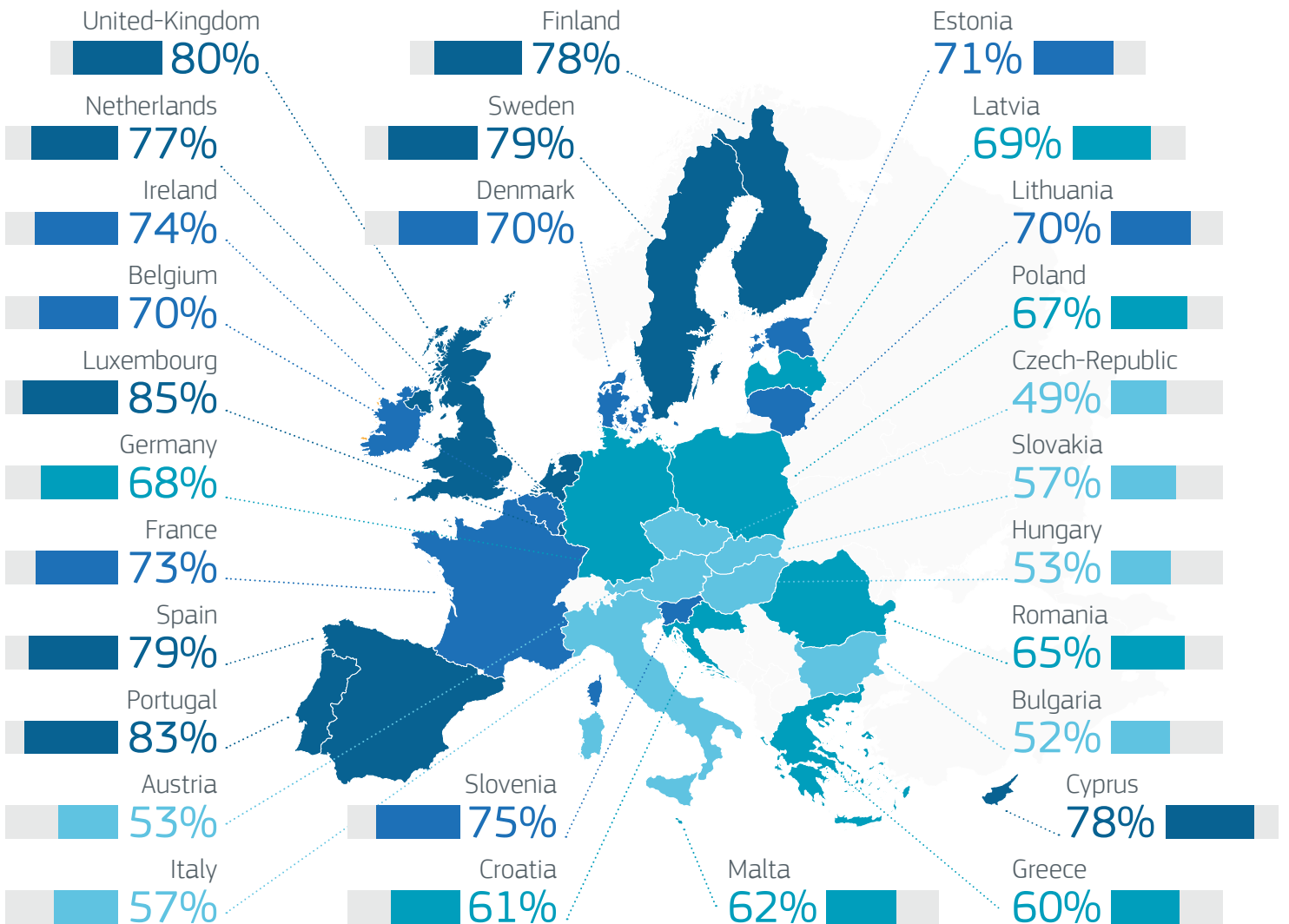


Immigrants themselves are mostly responsible **20%**

The host society is mostly responsible **8%**

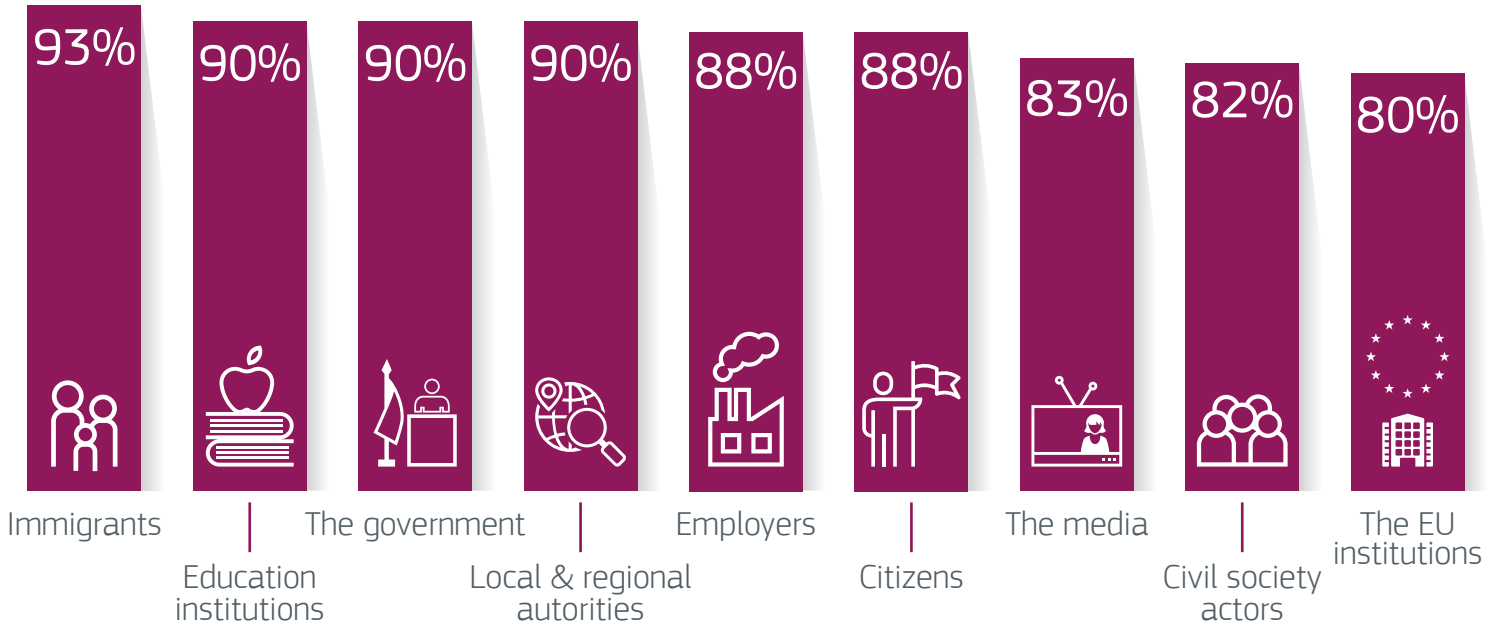
3% Don't know

% INTEGRATION IS A TWO-WAY PROCESS WHERE BOTH THE IMMIGRANTS AND THE HOST SOCIETY ARE RESPONSIBLE FOR SUCCESSFUL INTEGRATION

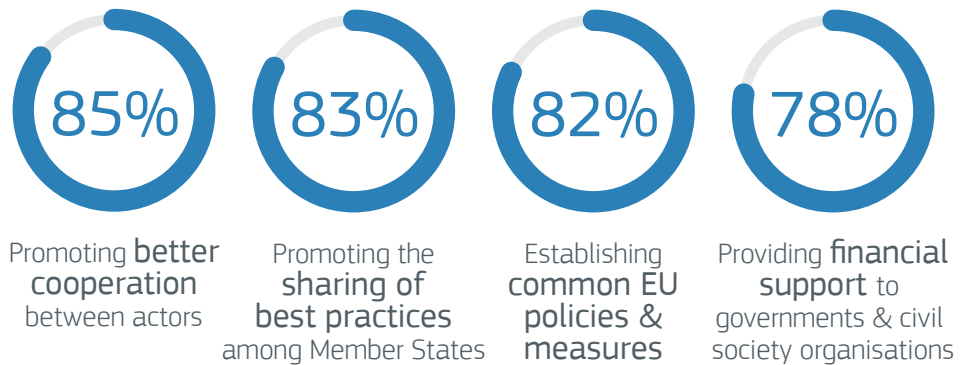


5 | Who is responsible for the integration of immigrants?

EUROPEANS SAY **EVERYONE** HAS AN **IMPORTANT ROLE** TO PLAY IN THE **INTEGRATION** OF IMMIGRANTS



THERE IS WIDE AGREEMENT WITH SOME MEASURES THAT THE **EUROPEAN UNION** CAN TAKE TO **SUPPORT IMMIGRANTS...**



IN THE EU, AROUND HALF THINKS THAT THEIR **GOVERNMENT IS DOING ENOUGH** TO FOSTER THE INTEGRATION OF IMMIGRANTS INTO SOCIETY

